



A ONE DOUBLE BEDROOM top (second) floor flat in a CONVERTED PERIOD BUILDING located off BRIGHTON SEAFRONT. The accommodation comprises OPEN PLAN LOUNGE/KITCHEN, FEATURE BRICK WALL, BATHROOM, GAS CENTRAL HEATING, EPC C.

- ONE DOUBLE BEDROOM FLAT
- CONVERTED PERIOD BUILDING
- LOCATED OFF BRIGHTON SEAFRONT
- OPEN PLAN LOUNGE/KITCHEN
- LOUNGE WITH FEATURE BRICK WALL
- KITCHEN WITH APPLIANCES
- STYLISH BATHROOM
- GAS CENTRAL HEATING
- TO BE RE PAINTED PRIOR TO TENANCY





SECOND FLOOR

ENTRANCE LOBBY

Washing machine.

OPEN PLAN LOUNGE/KITCHEN

Three sash windows to bay, feature exposed brick wall, two wall lights, two radiators.

KITCHEN

Fitted with a range of eye level wall cupboards and base cupboard and drawer units, stainless steel single bowl single drainer sink unit with mixer tap, electric oven, gas hob with stainless steel extractor hood over, fridge/freezer, ceiling spotlights.

BEDROOM

Sash window to rear, cupboard to recess housing boiler, radiator.

BATHROOM

Fitted with white suite comprising panel bath with centralised tap and fixed head shower over, screen to side, wall hung wash hand basin, low level close coupled WC, fitted mirror to one wall, clear ceiling with lights above, extractor fan, chrome ladder style heated towel rail.

COUNCIL TAX BAND A - £1,637.19

ADDITIONAL INFORMATION

NEW ASSURED SHORTHOLD TENANCIES (ASTs) SIGNED ON OR AFTER 1 JUNE 2019

Holding Deposit (per tenancy)

One week's rent. This is to reserve a property. Please Note: This will be withheld if any relevant person (including any guarantor(s)) withdraw from the tenancy, fail a Right-to-Rent check or provide materially significant false or misleading information. The holding deposit will be offset against the first months rent.

Security Deposit (per tenancy. Rent under £50,000 per year)

Five weeks' rent. This covers damages or defaults on the part of the tenant during the tenancy.

Security Deposit (per tenancy. Rent of £50,000 or over per year)

Six weeks' rent. This covers damages or defaults on the part of the tenant during the tenancy.

Unpaid Rent

Interest at 3% above the Bank of England Base Rate from Rent Due Date until paid in order to pursue non-payment of rent. Please Note: This will not be levied until the rent is more than 14 days in arrears.

Lost Key(s) or other Security Device(s)

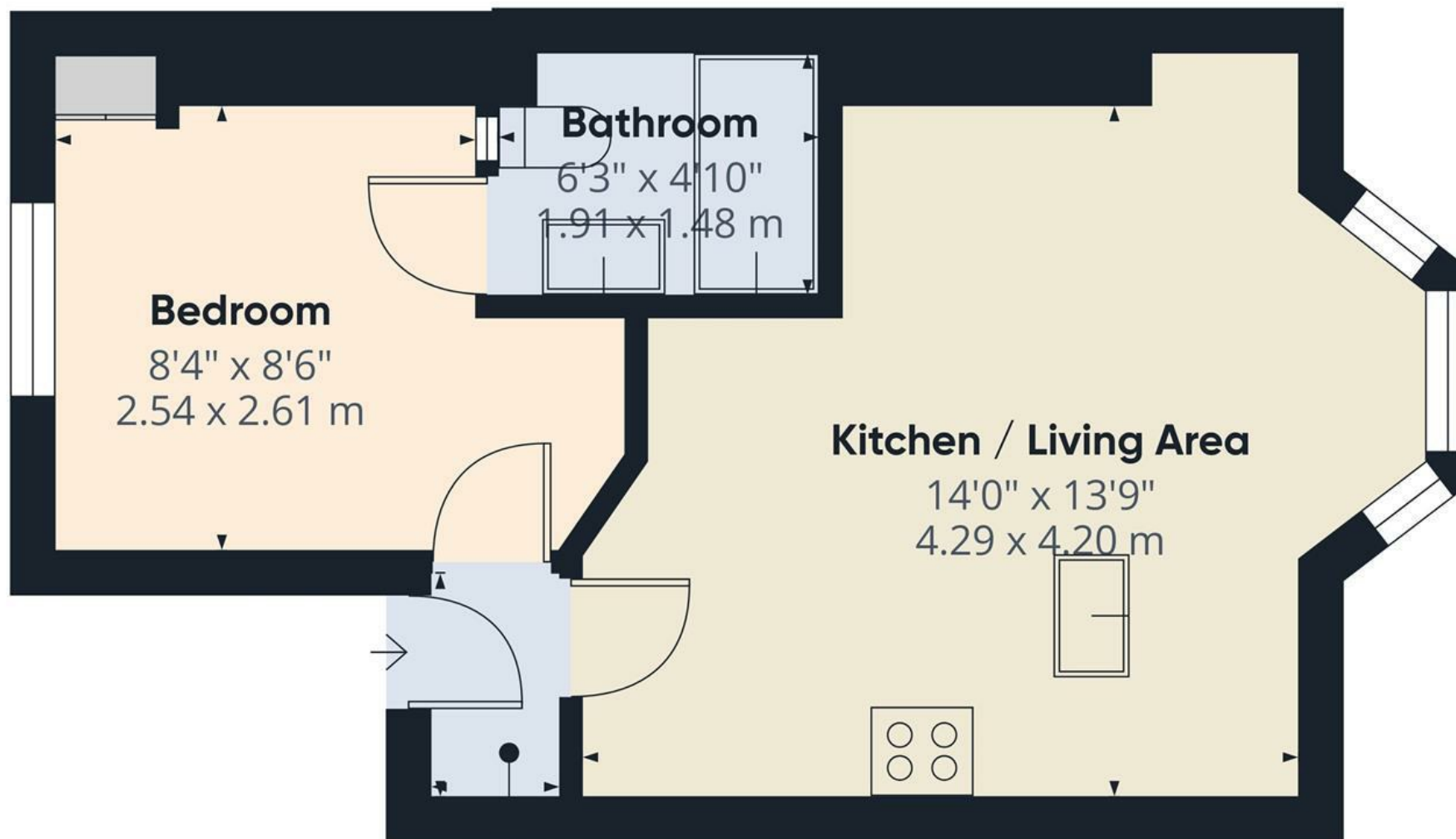
Tenants are liable to the actual cost of replacing any lost key(s) or other security device(s). If the loss results in locks needing to be changed, the actual costs of a locksmith, new lock and replacement keys for the tenant, landlord any other persons requiring keys will be charged to the tenant. If extra costs are incurred there will be a charge of £15 per hour (inc. VAT) for the time taken replacing lost key(s) or other security device(s).

Variation of Contract (Tenant's Request)

£50 (inc. VAT) per agreed variation. To cover the costs associated with taking landlord's instructions as well as the preparation and execution of new legal documents.

Change of Sharer (Tenant's Request)

£50 (inc. VAT) per replacement tenant or any reasonable costs incurred if higher. To cover the costs associated with taking landlord's instructions, new tenant referencing and Right-to-Rent checks, deposit registration as well as the preparation and execution of new legal documents.



Approximate total area^m

317 ft²

29.5 m²

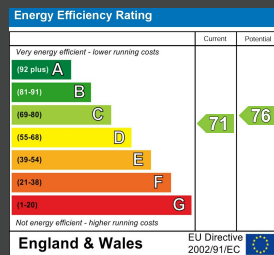
(1) Excluding balconies and terraces

Calculations reference the RICS IPMS 3C standard. Measurements are approximate and not to scale. This floor plan is intended for illustration only.

GIRAFFE360



ENERGY PERFORMANCE CERTIFICATE (EPC)



Council Tax Band: A

Maintenance: n/a

Lease Length: n/a

Ground Rent: n/a

Tel: 01273 323000

Email: sales@brices.co.uk

www.brices.co.uk

DISCLAIMER

Money Laundering Regulations 2007: Intending purchasers will be asked to produce identification documentation upon acceptance of any offer. We would ask for your cooperation in producing such in order that there will not be a delay in agreeing the sale. General: Whilst we endeavour to make our sales particulars fair, accurate and reliable they are only a general guide to the property and accordingly if there is any point which is of particular importance to you please contact the office and we will be pleased to check the position for you. Buyers must check the availability of any property and make an appointment to view, before embarking on any journey to see a property. Items shown in photographs are NOT included unless specifically mentioned within the sales particulars. They may however be available by separate negotiation. Measurements: These approximate room sizes are only intended as general guidance. You must verify the dimensions carefully before ordering carpets or any built in furniture. Services: Please note we have not tested any apparatus, equipment, fixtures and fittings or services and so cannot verify that they are in working order or fit for the purpose. A Buyer is advised to obtain verification from their Solicitor or Surveyor. References to the Tenure of a Property are based on information supplied by the Seller. The Agent has not had sight of the title documents. A Buyer is advised to obtain verification from their Solicitor. These particulars are issued in good faith but do not constitute representations of fact or form part of any offer or contract.

360°
brices
VIRTUAL VIEWINGS

brices
sales & lettings